

Групповая комната



Приемная



Спальня



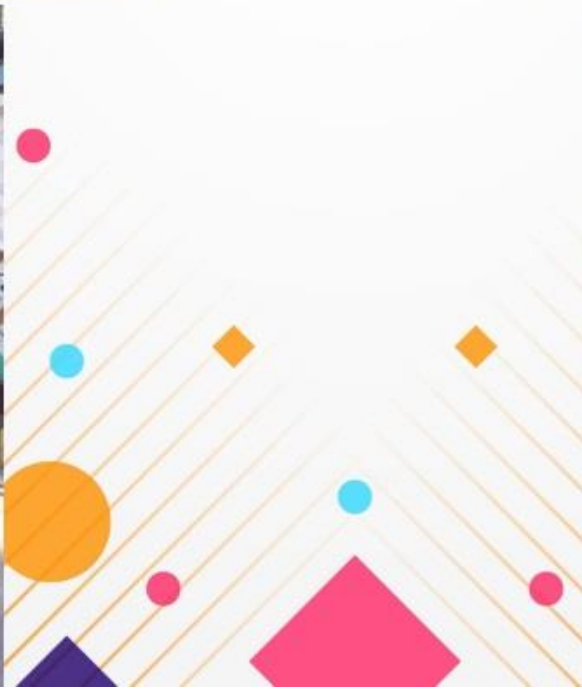
Моечная комната



Туалетная комната



Групповая площадка

The image consists of two photographs of a children's group area. The left photograph shows an indoor play area with a dark blue floor. On the left wall, there is a large, colorful clock and a mural of children playing on a rainbow. To the right, there is a small wooden table and chairs, and a colorful rug on the floor. The right photograph shows an outdoor play area with a blue floor. In the center, there is a small, colorful house with a red roof and a yellow window. To the left of the house, there is a hopscotch grid painted on the ground. In the background, there is a bookshelf filled with books and a small yellow slide.

Групповая площадка



Групповая площадка

